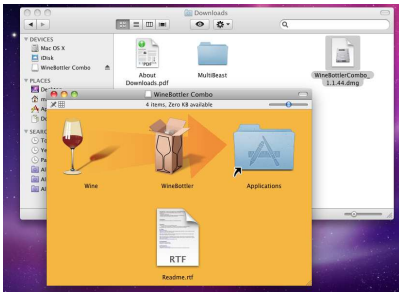


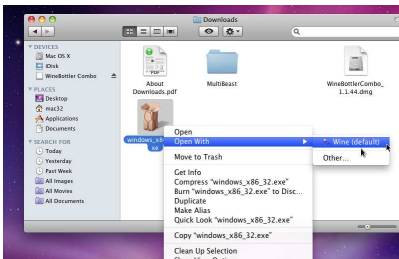


[[GAMS Home](#) | [Support](#) | [Sales](#) | [Solvers](#) | [Documentation](#) | [Model Library](#) | [Search](#) | [Contact Us](#)]

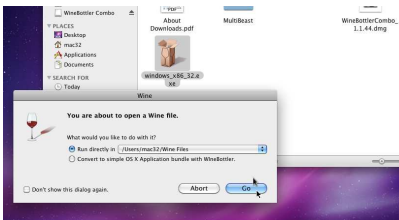
1. open with doubleclick the file "WineBottlerCombo_1.1.44.dmg". You can download from <http://winebottler.kronenberg.org/> [<http://winebottler.kronenberg.org/>]
2. now drag "Wine" and "WineBottler" into Applications-Folder



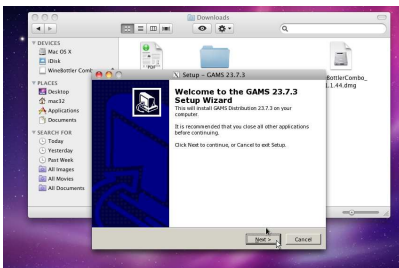
3. download current GAMS-Version from <http://www.gams.com> [<http://www.gams.com>] (e.g. Windows 32 bit)
4. rightclick on windows_x86_32.exe → open with → wine(default)



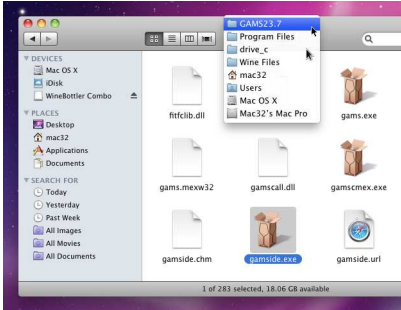
5. choose run directly in (Users/your username/Wine Files) and click "GO"



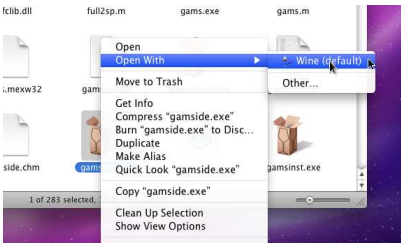
6. if you run wine first time, this will take a few minutes, then Setup-GAMS window will be started. Follow installation instructions from the setup assistant.



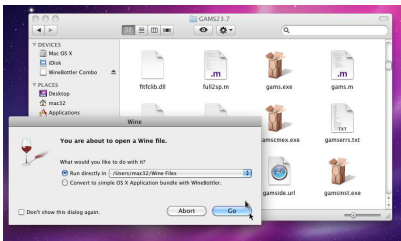
7. after installation is complete, open "Finder" and navigate to the Places→your username→Wine Files→drive_c→Program Files→GAMS23.7 (default installation location)



8. rightclick on gamside.exe → open with → wine(default)



9. choose run directly in (Users/your username/Wine Files) and click "GO"



projects/short_installation_instruction_for_wine_gams_and_how_to_bring_them_together.txt · Last modified: 2011/12/07 08:41 by bussieck
Except where otherwise noted, content on this wiki is licensed under the following license: CC Attribution-Noncommercial-Share Alike 3.0 Unported [http://creativecommons.org/licenses/by-nc-sa/3.0/]